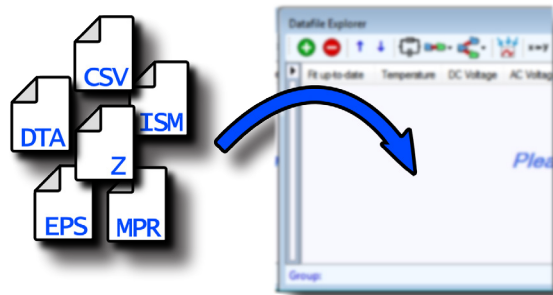
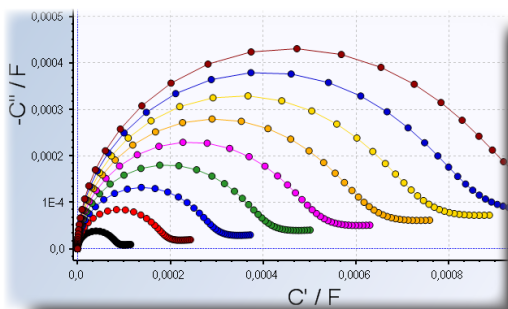


Easy Data Import



- Import **more than ten^{SDK}** different data file formats or arbitrary text files.
- **Easy drag & drop** operation.
- Read and use additional metadata from data files like temperature or DC bias.
- Easily duplicate or merge data files as needed.

Versatile Evaluation Tools



- **Display and fit** data in the **impedance, complex capacitance or admittance plane^{SDK}**.
- Visualize your spectra in multiple different representations like Nyquist or Bode plots^{SDK}.
- **Overlay multiple spectra** for easy comparison.

^{SDK} Extendable with the RelaxIS SDK

RelaxIS - Impedance Spectrum Analysis is a fast and powerful software solution for **analyzing** electrochemical impedance spectra.

It allows for the quick and comfortable evaluation of **large amounts of spectra** by combining powerful fitting algorithms with a modern user interface.

RelaxIS supports a broad variety of **file formats from different hardware manufacturers** as well as arbitrary text formats. Files can be loaded by simple drag & drop operations. It is possible to perform automatic fitting of different standard spectra as well as using **arbitrary, user-defined equivalent circuits**.

Multiple advanced features like the live preview of fit results, fitting of temperature dependent data to **Arrhenius and VFT** functions, a circuit simulator and powerful export and reporting capabilities make **RelaxIS** a valuable asset for everyone using impedance spectroscopy.

For questions, quotes and orders, please contact us:

rhd instruments GmbH & Co. KG
Otto-Hesse-Straße 19 / T3
64293 Darmstadt
Germany

info@rhd-instruments.de
T +49 6151 8707187

www.rhd-instruments.de

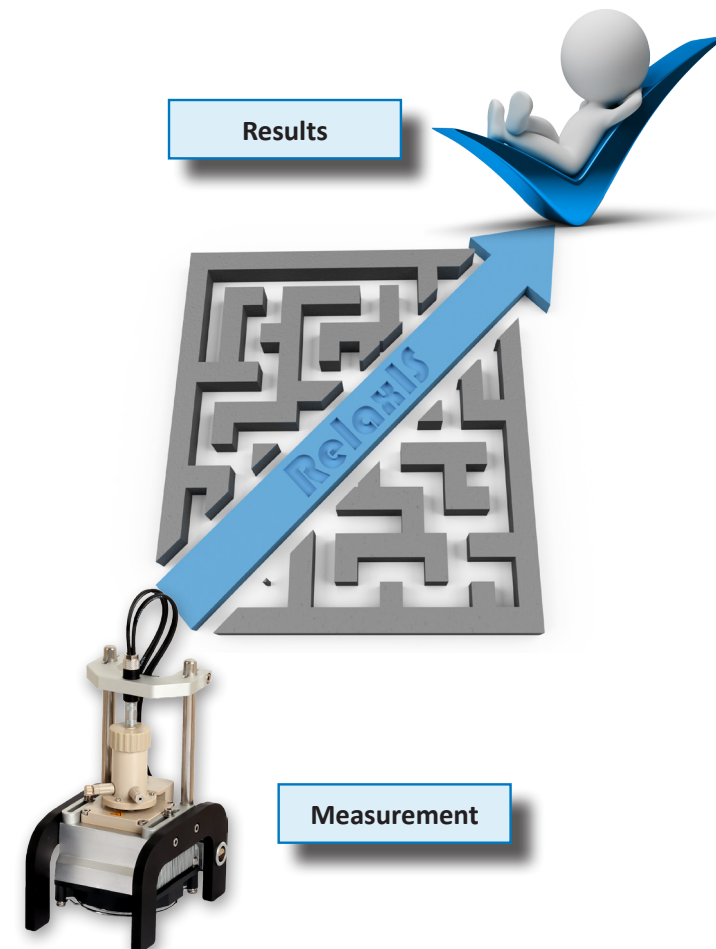


RelaxIS 3

Impedance Spectrum Analysis

Focus your attention on the results and not on how to obtain them.

RelaxIS - Impedance Spectrum Analysis eases impedance data analysis.



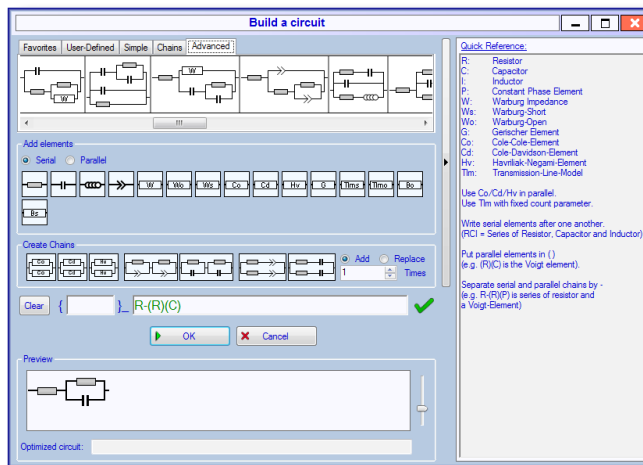
flexible cell solutions for your electrochemical research



Main Features

- Easy to use drag & drop import of various data formats.
- Visualize and compare multiple spectra in Nyquist or Bode plots.
- Initialize fits using graphical aides or just use the Auto Fit without any initialization!
- Automatically evaluate spectra with specialized wizards.
- Fit even large amounts of spectra with modern algorithms and UI.
- Use a large model library, extendible with your own equivalent circuits and formulas.
- Export results easily with user-defined report templates, or raw data exports.
- Learn about impedance spectra with the RelaxIS Circuit Simulator.
- Extend RelaxIS with your own ideas using the RelaxIS SDK.
- Use RelaxIS as a central data server with RelaxIS Remote.

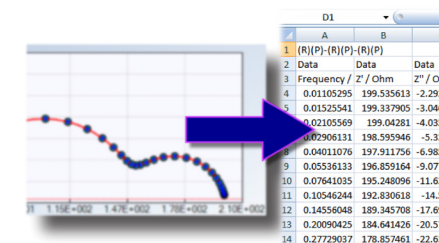
Equivalent Circuits



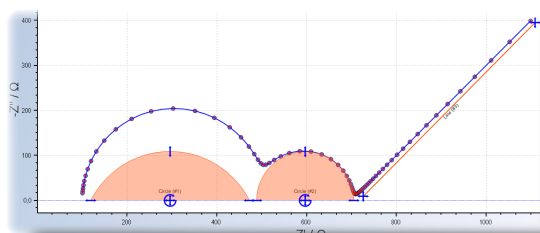
- Use a **large library** of more than 70 pre-made, common **equivalent circuits** and models.
- Quickly create your own desired circuits.
- Create new** circuit elements^{SDK} to solve your tasks.

Data Handling

- Create further evaluations^{SDK} of **fit parameters** as a **function of metadata**, e.g. Arrhenius or VFT-Fits.
- Easy export of any type of data into text formats for use in third-party programs.
- Export graphs or equivalent circuits directly as images for use in presentations.
- Screen potential circuits with a genetic algorithm.



Data Fitting



Determination of fit start values by simple drawing using the circuit and line tool.

- Use a combination of some of the most powerful fitting algorithms and data weighting options^{SDK}.
- The **Auto Fit** function can initialize and fit any model automatically!
- Calculate parameters by **drawing circles** and **lines**.
- Save precious time** by using the extensive **batch fitting** possibilities.

Additional Features

- Calculate the **Distribution of Relaxation Times (DRT)** for your impedance spectra.
- Simulate** arbitrary **equivalent circuits** with free options in the RelaxIS Circuit Simulator.
- Determine the **quality of your data** by linear **Kramers-Kronig** testing and residual analysis.
- Extend RelaxIS with your **own plugins** using the RelaxIS **SDK**.
- Use RelaxIS as a **central data server** with RelaxIS Remote and RelaxIS WCF Link^{SDK}.

